



INDOFINE Chemical Company, Inc.

121 Stryker Lane, Bldg. 30, Suite 1 • Hillsborough, NJ 08844 • U.S.A.

Phone: (908) 359-6778 • FAX: (908) 359-1179

website: www.indofinechemical.com

e-mail: chemical@indofinechemical.com

CERTIFICATE OF ANALYSIS

Catalog Number: P-004

Product Name: **PIPERLONGUMINE**
(Piplartine)

CAS Number: [20069-09-4]

Lot No.: 2111607

Molecular Formula: C₁₇H₁₉NO₅

Molecular Weight: 317.34

Melting Point: 121-125°C

Appearance: White powder

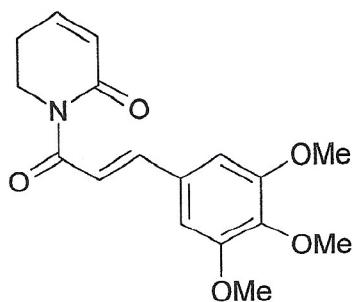
Solubility: Soluble in Chloroform

NMR Spectrum: Conforms to the structure

TLC: Hexane:Ethyl acetate (7:3)

Water content(KF): 0.10%

Purity(HPLC): 99.95%



Prepared by:
Ramesh Mandadi
Ramesh Mandadi
Director of Operations

Reviewed and Approved by:
Sujata Moton
Sujata Moton
VP



INDOFINE Chemical Company, Inc.

121 Stryker Lane, Bldg. 30, Suite 1 • Hillsborough, NJ 08844 • U.S.A.

Phone: (908) 359-6778 • FAX: (908) 359-1179

website: www.indofinechemical.com

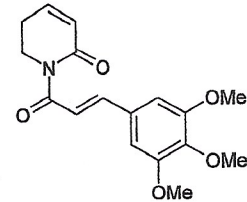
e-mail: chemical@indofinechemical.com

HPLC ANALYSIS

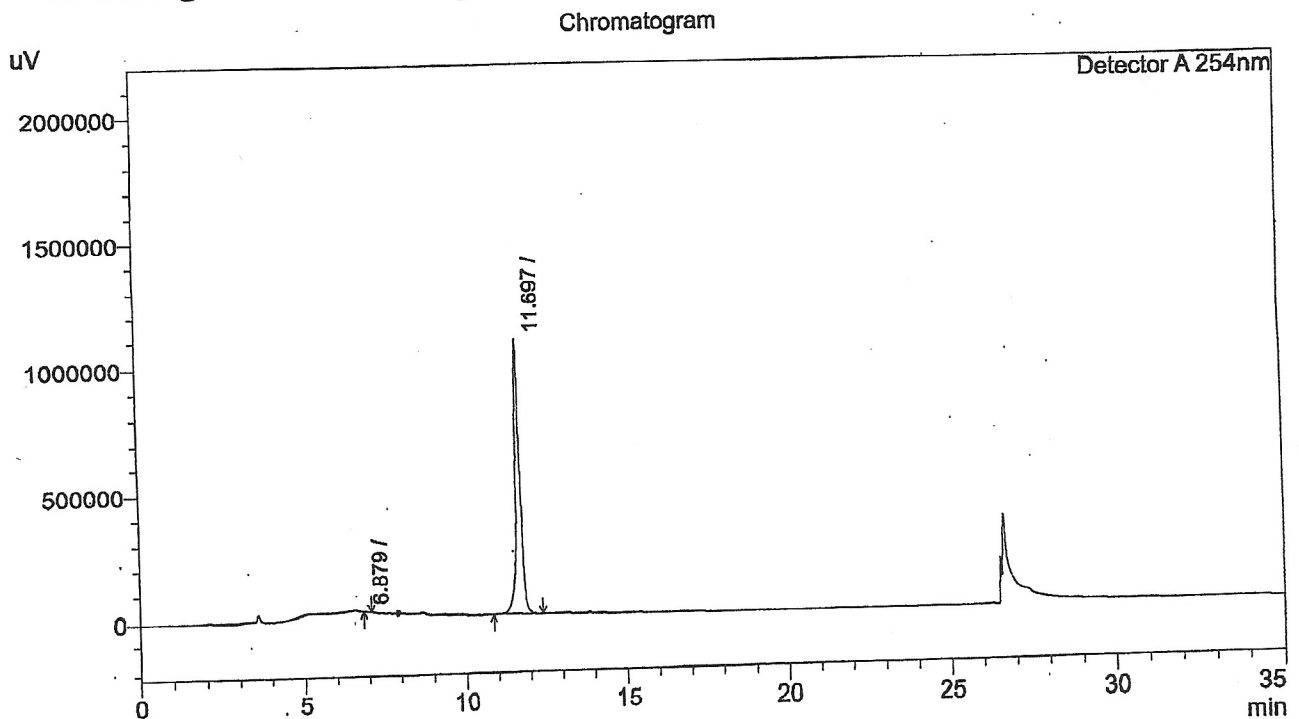
Sample ID :
Data Filename : 28102021242.lcd
Method Filename : Piperlongumine.lcm
Vial # : 1-1
Injection Volume : 10 uL

Catalog No.: P-004
Product Name: Piperlongumine
Lot No.: 2111607

Column: Inertsil ODS-2 : 250mm x 4.6mm, 5.0um
MP-A: Acetonitrile, MP-B: 10mM Ammonium acetate in water
Flow Rate: 1.0 ml/min,
Gradient program : 0.01/90, 12/10, 20/10, 23/90, 30/10 (% of A Conc)
Diluent: Acetonitrile (8 mg/25ml in diluent)
Acquired by: Sanjeev



<Chromatogram>



<Peak Table>

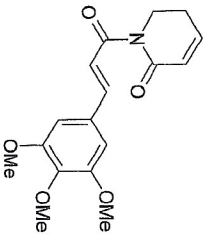
Detector A 254nm					
Peak#	Name	Ret. Time	Area	Area%	Relative Retention Time
1		6.879	5446	0.05	0.59
2		11.697	11411107	99.95	1.00
Total			11416553	100.00	

Prepared by:
Ramesh Mandadi
Ramesh Mandadi
Director of Operations

Reviewed and Approved by:
Sujata Moton
Sujata Moton
VP

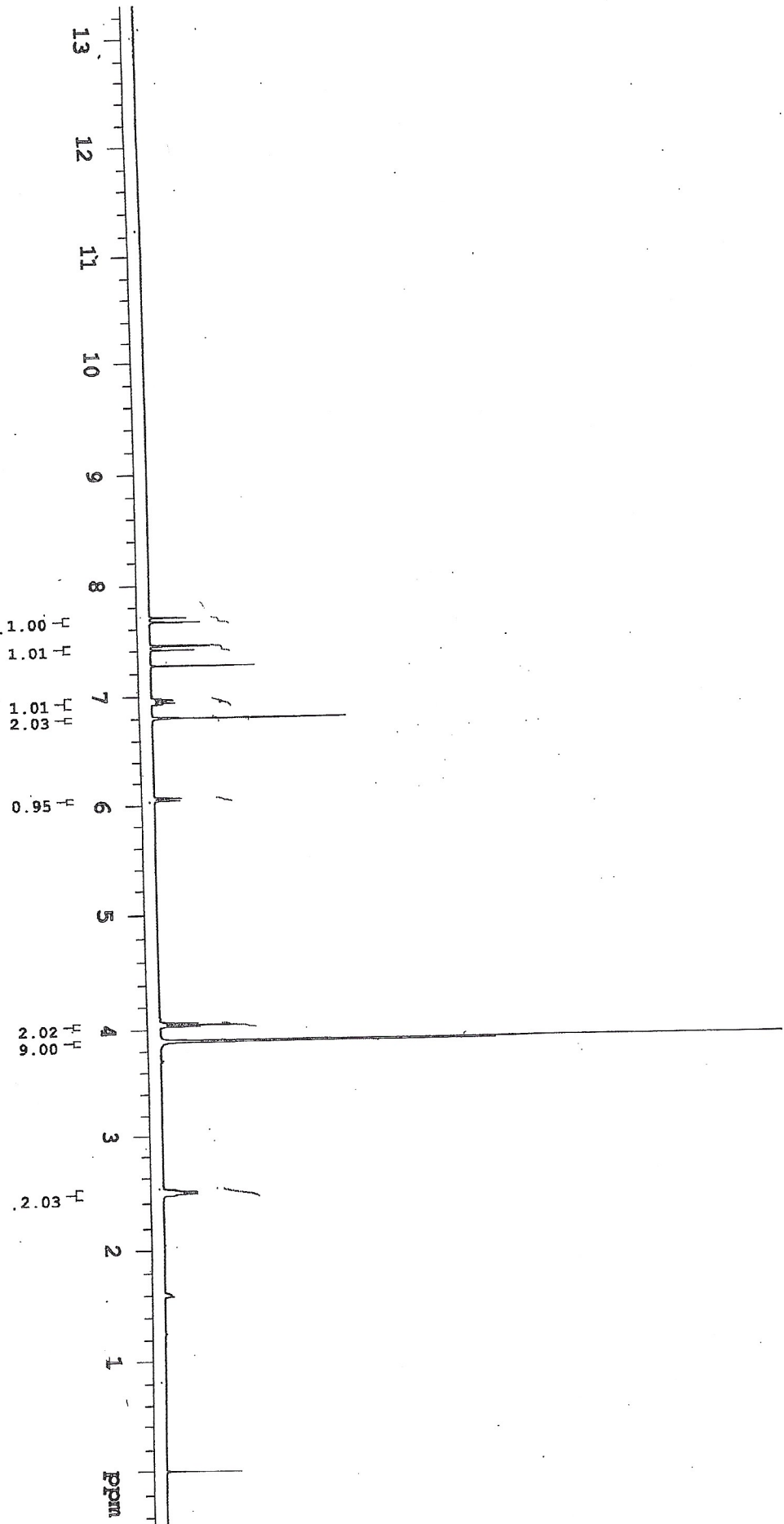


INDOFINE Chemical Company, Inc.
121 STRYKER LANE
BLDG. 30, SUITE 1
HILLSBOROUGH, NJ 08844



¹H NMR

VARIAN 400MHZ NMR
Solvent: CDCl₃



Catalog No.: P-004
Product Name: Piperlongumine
Lot No.: 2111607